

ACDEU

Diesel Engine Driven/Sound Attenuated

**Priming Assisted Centrifugal Environmental  
Silent Pump w/Autostart**



**Model PA6C60-4045D-ESP  
Size 6" x 6"**



Total Head		Capacity of Pump in U.S. Gallons per Minute (GPM) at Continuous Performance				
P.S.I.	Feet					
63.3	146	200	200	200	200	200
60.7	140	400	400	400	400	400
52.0	120	820	1000	1000	1000	1000
43.4	100	960	1380	1420	1420	1420
34.7	80	1040	1500	1770	1770	1770
26.0	60	1100	1510	1815	2050	2050
17.4	40	1140	1505	1820	2120	2250
8.7	20	1200	1550	1820	2150	2360
<b>Suction Lift</b>		<b>25'</b>	<b>20'</b>	<b>15'</b>	<b>10'</b>	<b>5'</b>



**PUMP SPECIFICATIONS**

- Size:** 6" x 6" (152 mm x 152 mm) NPT - Male.
- Casing:** Ductile Iron No. 65-45-12. Maximum Operating Pressure 100 psi (690 kPa).\*
- Open Type, Two Vane Impeller:** Ductile Iron No. 65-45-12. Handles 3" (76,2 mm) Diameter Spherical Solids.
- Impeller Shaft:** Stainless Steel No. 17-4 PH.
- Replaceable Wear Plate:** Ductile Iron No. 80-60-03.
- Removeable Cleanout Cover Plate:** Carbon Steel Plate.
- Intermediate:** Gray Iron No. 30.
- Seal Plate:** Gray Iron No. 30.
- Seal:** Mechanical, Oil-Lubricated. Silicon Carbide Rotating and Stationary Faces. Stainless Steel No. 316 Stationary Seat. Fluorocarbon Elastomers (DuPont Viton® or Equivalent). Stainless Steel No. 18-8 Cage and Spring. Maximum Temperature of Liquid Pumped, 160°F (71°C).\*
- Shaft Sleeve:** Stainless Steel No. 17-4 PH.
- Priming Chamber:** Gray Iron No. 30.
- Discharge Check Valve:** Gray Iron No. 30 Housing w/Buna-N Flapper.
- Radial and Thrust Bearings:** Open Double Ball.
- Bearing and Seal Cavity Lubrication:** SAE No. 30 Non-Detergent Oil.
- Gaskets:** Resistant Synthetic Rubber, Cork, PTFE, Vegetable Fiber, and Compressed Synthetic Fibers.
- Hardware:** Standard Plated Steel.
- Bearing and Seal Cavity Oil Level Sight Gauges.**

\*Consult Factory for Applications Exceeding Maximum Pressure and/or Temperature Indicated.

**Standard Equipment:** Soundproof (EPA Average 67 dBA at 23 feet [7 meters] Under Load per CPB Standards) Lightweight Aluminum Enclosure - Removable for Maintenance of Pump or Engine - w/Padlockable Door Panels. Spill Containment Base w/Integral Drains and Fork Lift Pockets. Gear-Driven Air Compressor. Strainer. Single Ball Type Float Switch.\*\*

\*\*50 Ft. (15 m) Standard Length; Dual Switches and Alternate Cable Lengths Available From the Factory.

**Optional Equipment:** Battery. Suction Vacuum and Discharge Pressure Gauge Kit. Over-the-Road Trailer (Meets D.O.T. and Transport Canada Requirements) Available w/ Either Electric or Hydraulic Surge Brakes, Running Lights, Two Trailer Jack Stands and Safety Chains. EPS w/Submersible Transducer Liquid Level Sensor (50 Ft [15 M] Cable Standard, Alternate Lengths Available).

**WARNING!**

Do not use in explosive atmosphere or for pumping volatile flammable liquids.

**ENGINE SPECIFICATIONS**

- Model:** John Deere 4045D "Power Tech."
- Type:** Four Cylinder, Four Cycle, Liquid Cooled Diesel Engine.
- Displacement:** 276 Cu. In. (4,5 liter).
- Governor:** Mechanical.
- Lubrication:** Forced Circulation.
- Air Cleaner:** Dry Type.
- Oil Reservoir:** 9 U.S. Qts. (8,5 liter) Dry; 8 U.S. Qts. (7,5 liter) Refill.
- Fuel Tank:** 84 U.S. Gal. (318 liter).
- Full Load Operating Time:** 28 Hrs.
- Starter:** 12V Electric.

**Standard Features:** Low Oil Pressure, High Coolant Temperature and Start Failure Safety Shut Down Switches/Indicators. Throttle Control. Autostart Instrument Panel Includes: Tachometer, Voltmeter, Hourmeter, Coolant Temperature and Oil Pressure Indicators, Manual/Stop/Auto Key Switch, 10 Amp Fuse, Audible Startup Warning Delay. Muffler w/Guard and Weather Cap.

**JOHN DEERE PUBLISHED PERFORMANCE:**

Maximum Continuous BHP 76 (57 kW) @ 2500 RPM  
Maximum Dynamic BHP 80 (60 kW) @ 2500 RPM



**THE GORMAN-RUPP COMPANY • MANSFIELD, OHIO**

GORMAN-RUPP OF CANADA LIMITED • ST. THOMAS, ONTARIO, CANADA

www.grpumps.com

Specifications Subject to Change Without Notice

Printed in U.S.A.

# Specification Data

SECTION 42, PAGE 1120

APPROXIMATE DIMENSIONS and WEIGHTS

NET WEIGHT: 4430 LBS. (2009 KG.)  
 SHIPPING WEIGHT: 4660 LBS. (2114 KG.)  
 EXPORT CRATE SIZE: 397 CU. FT. (11.2 CU. M.)

## SKID BASE

4430 LBS. (2009 KG.)

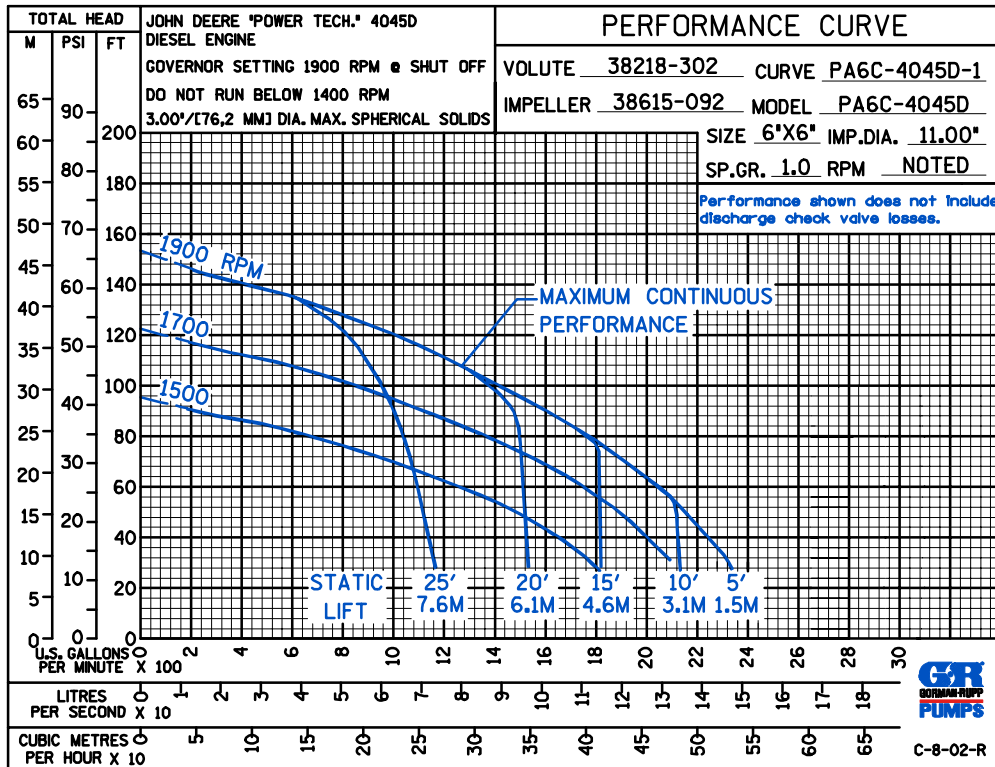
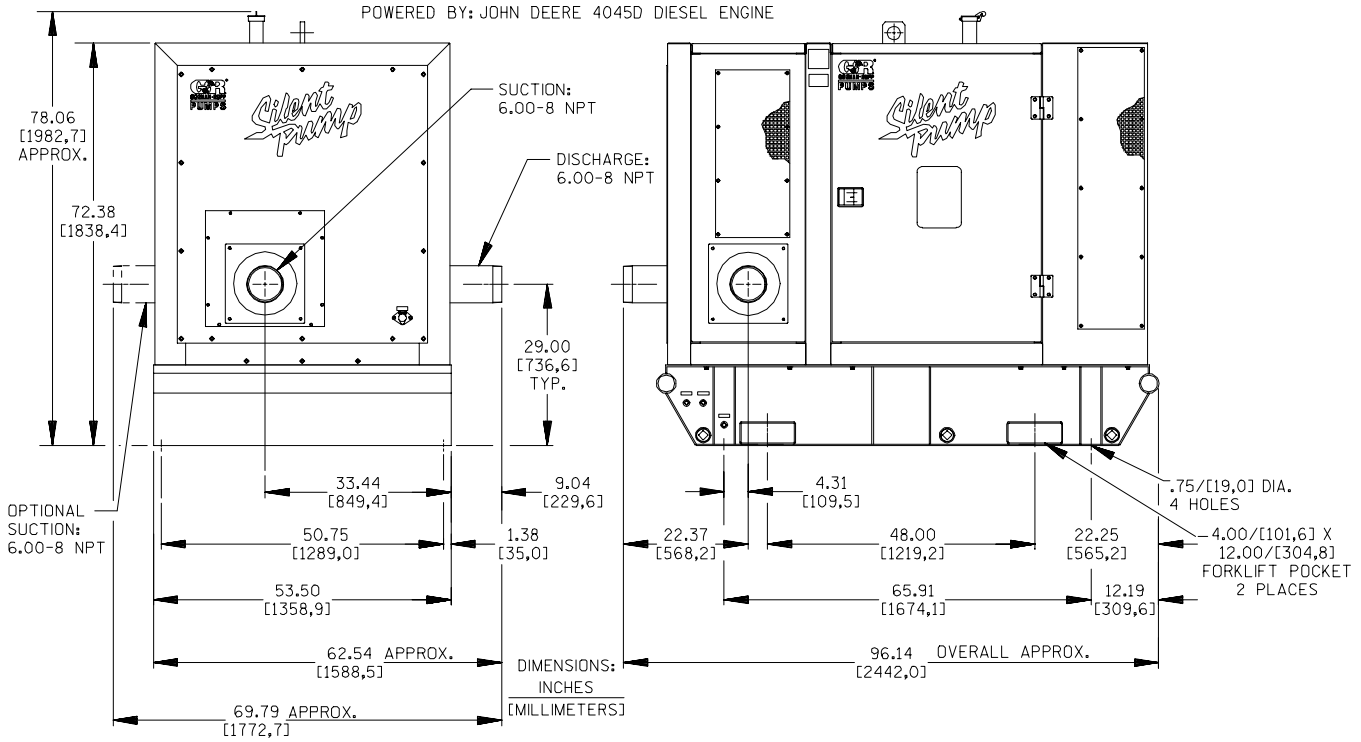
4660 LBS. (2114 KG.)

397 CU. FT. (11.2 CU. M.)

## HIGHWAY TRAILER

6105 LBS. (2769 KG.)

6105 LBS. (2769 KG.)



THE GORMAN-RUPP COMPANY • MANSFIELD, OHIO

GORMAN-RUPP OF CANADA LIMITED • ST. THOMAS, ONTARIO, CANADA

Specifications Subject to Change Without Notice

Printed in U.S.A.